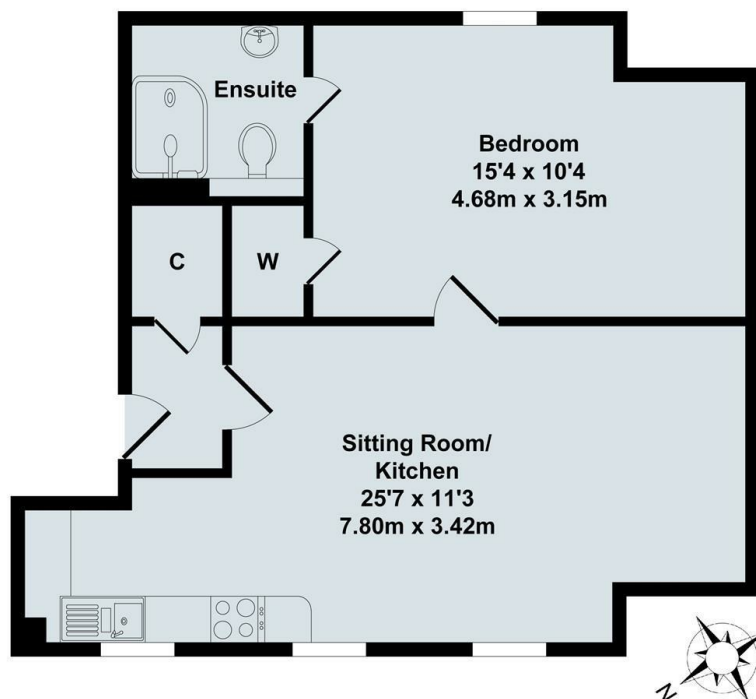




## Flat 4, 30 Marston Street, East Oxford, Oxford, OX4 1JU

£1,400 PCM - 7th February 2026.

- First floor apartment
- Communal Bike Shed
- Council Tax Band B
- One bedroom
- Electric heating
- EPC rating C
- Unfurnished with white goods
- No off street or on street parking available
- Mains electricity and water



Total Approx. Floor Area 475 Sq.Ft. (44.10 Sq.M.)

All items illustrated on this plan are included in the "Total Approx Floor Area"

## Directions

## Viewings

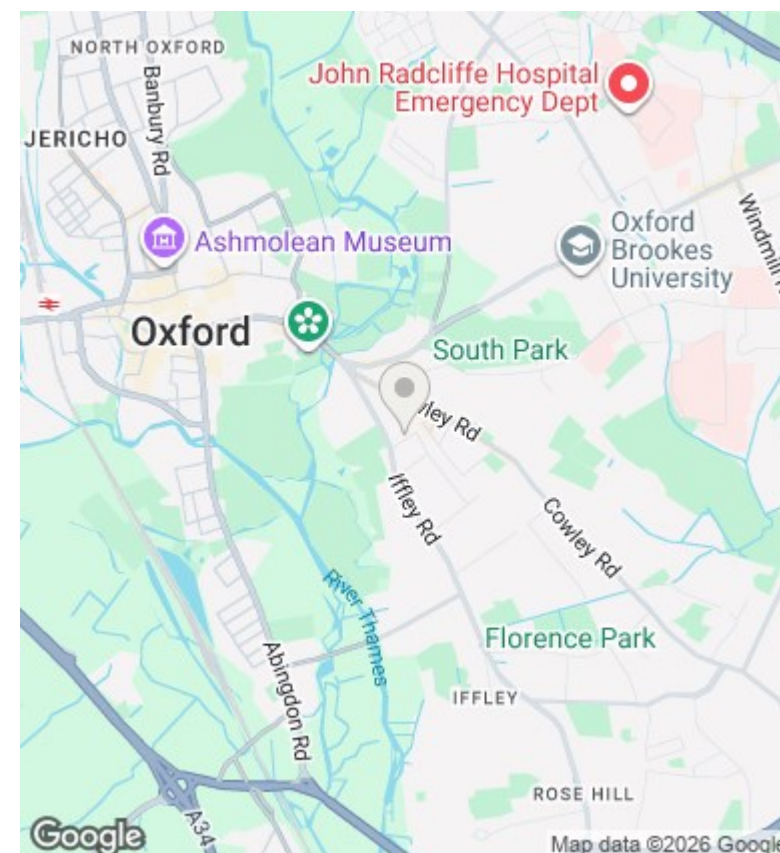
Viewings by arrangement only. Call 01865 515900 to make an appointment.

## Council Tax Band

B

## EPC Rating:

C



| Energy Efficiency Rating                    |           |                         |
|---|-----------|-------------------------|
|   | Current   | Potential               |
| Very energy efficient - lower running costs |           |                         |
| (92 plus) <b>A</b>                          |           | <b>99</b>               |
| (81-91) <b>B</b>                            |           |                         |
| (69-80) <b>C</b>                            | <b>73</b> |                         |
| (55-68) <b>D</b>                            |           |                         |
| (39-54) <b>E</b>                            |           |                         |
| (21-38) <b>F</b>                            |           |                         |
| (1-20) <b>G</b>                             |           |                         |
| Not energy efficient - higher running costs |           |                         |
| England & Wales                             |           | EU Directive 2002/91/EC |